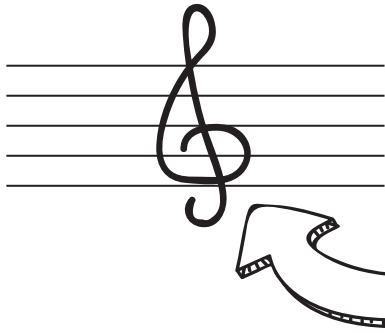


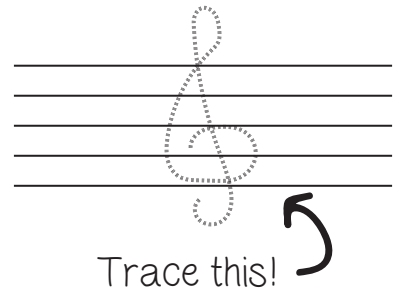
Let's Read Music

treble and bass clef

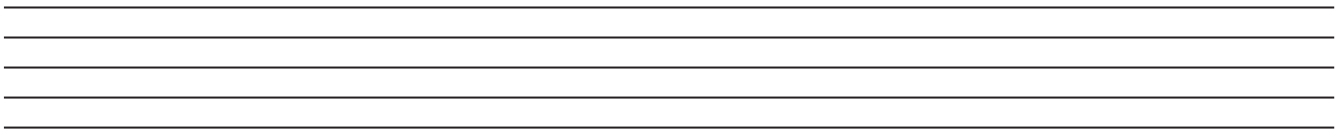
Let's learn about the **treble clef** and the **bass clef**. These clefs are the most common and determine which pitches are placed on the lines and spaces.



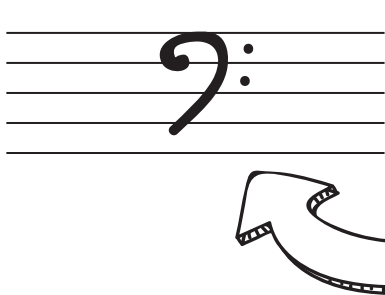
This is a **treble clef**.
(also known as a G clef)
But let's just call it
a **treble clef** for now.



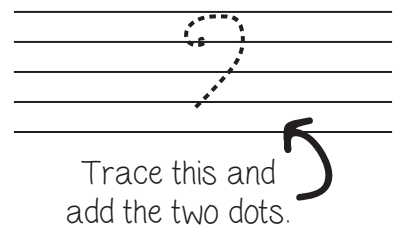
Now draw five of your own **treble clefs** on the staff below:



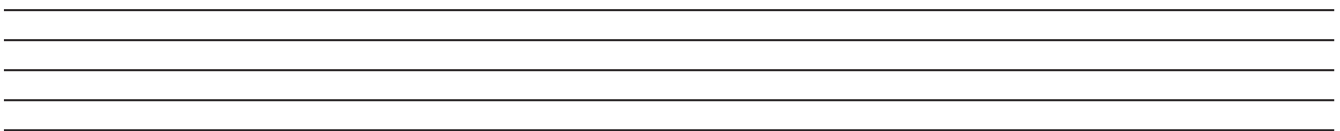
The **treble clef** is used for instruments and voices that are higher in pitch.



This is a **bass clef**.
(also known as a F clef)
But let's just call it
a **bass clef** for now.



Now draw five of your own **bass clefs** on the staff below:



The **bass clef** is used for instruments and voices that are lower in pitch.