

# Let's Read Music

## the music alphabet & the bass clef

The musical alphabet is the letters we use for naming pitches. The alphabet consists of seven letters: A, B, C, D, E, F, G. After "G" the alphabet repeats.

1. On the line below, write out the musical alphabet three times in a row:

\_\_\_\_\_

2. Now write it backwards three times in a row (G, F, E, D, C, B, A):

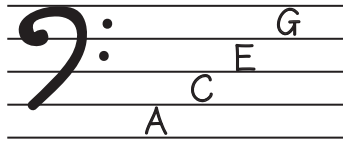
\_\_\_\_\_

Memorize by saying it over and over again.  
 ABCDEFGABCDEFGABC...  
 GFEDCBAGFEDCBAGFE...

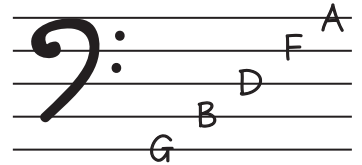


Each letter occupies a specific line or space on the treble clef.

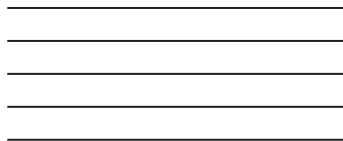
The spaces use the letters  
A-C-E-G



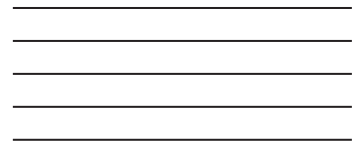
The lines use the letters  
G-B-D-F-A



3. Your turn!  
 Draw a bass clef and place ACEG on the staff



4. Your turn!  
 Draw a bass clef and place GBDFA on the staff

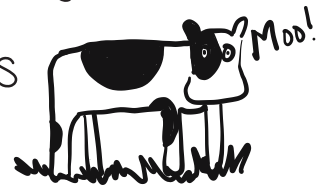


To help remember the letters that go on the lines & spaces, let's use mnemonic devices.



For the lines: Great Big Dragons Fly Around

For the spaces: All Cows Eat Grass



Lastly, let's fill in the entire bass clef staff:

5. Your turn! Write in the letters below:

