

FOR FLUTES ONLY

TREBLE CLEF



TIME SIGNATURE



WHOLE NOTE



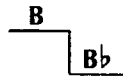
WHOLE REST



4/4 = 4 counts in each measure

A whole note gets 4 counts in 4/4 time. A whole rest gets 4 counts in 4/4 time.

FLAT

A flat (b) lowers the pitch of a note one half step. It remains in effect for the entire measure.

1 THE MAGIC FLUTE

B flat (Bb) Bb

○ = open
 ● = pressed down

▶ A double bar line marks the end of the music.

2 THE "A" TRAIN

A A

3 TWO TONE FLUTERS

▶ Use plenty of air.

4 G WHIZ

G G

5 FLUTE PURSUIT

▶ Are you playing with a good embouchure and hand position?

6 TUTTI FLUTIE

7 FLUTE COCKTAIL

▶ How is your posture?

FOR WOODWINDS ONLY

TREBLE CLEF



TIME SIGNATURE



WHOLE NOTE



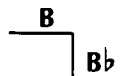
WHOLE REST



4/4 = 4 counts in each measure

A whole note gets 4 counts in 4/4 time. A whole rest gets 4 counts in 4/4 time.

FLAT



A flat (b) lowers the pitch of a note one half step. It remains in effect for the entire measure.

1 THE FIRST NOTE

D

o = open
● = pressed down

▶ A double bar line marks the end of the music.

2 THE SECOND NOTE

C

3 TEA FOR TWO

▶ Use plenty of air.

4 THE THIRD NOTE

B flat (Bb)

5 THREE OF A KIND

▶ Are you playing with a good embouchure and hand position?

6 THREE'S COMPANY

7 WOODWIND WHIRLWIND

▶ How is your posture?

FOR THE FULL BAND

TREBLE CLEF



TIME SIGNATURE



WHOLE NOTE



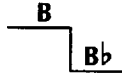
WHOLE REST



4/4 = 4 counts in each measure

A whole note gets 4 counts in 4/4 time. A whole rest gets 4 counts in 4/4 time.

FLAT

A flat (b) lowers the pitch of a note one half step. It remains in effect for the entire measure.

1 TIME FOR BAND

D

○ = open
● = pressed down

▶ A double bar line marks the end of the music.

2 THE FUN CONTINUES

C

3 WHOLE LOTTA COUNTING

▶ Write in the counting and clap the rhythm before you play.

4 FOUR SCORE

Page 39

B flat (Bb)

▶ When you see a page number followed by an arrow, *Excellerate* to the page indicated for additional studies.

5 MIX 'EM UP

6 MELTING POT

7 BAND ON PARADE



▶ Lines with a medal are *Achievement Lines*. The chart on page 47 can be used to record your progress.

HALF NOTE



HALF REST

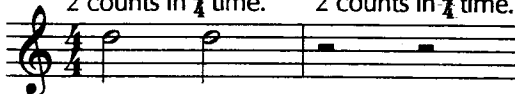


BREATH MARK

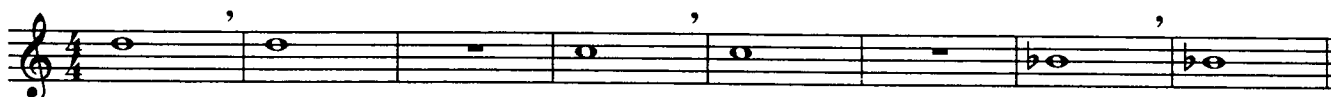


Each half note gets
2 counts in $\frac{4}{4}$ time.

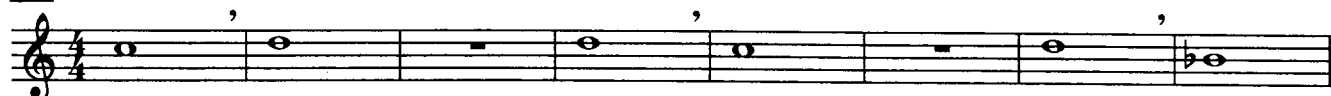
Each half rest gets
2 counts in $\frac{4}{4}$ time.



Take a breath.

8 A BREATH OF FRESH AIR

► Be sure to take a full breath of air.

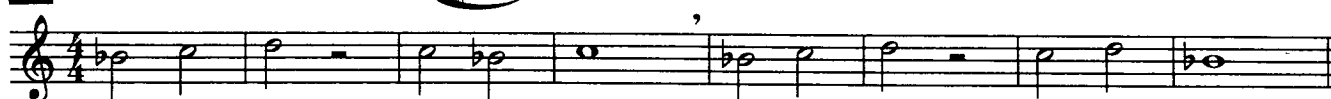
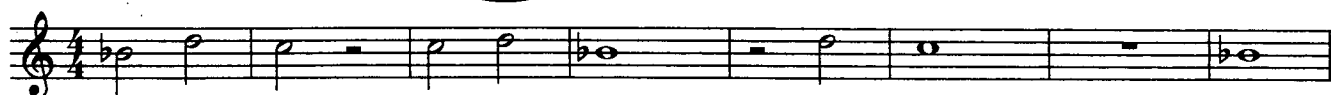
9 SIDE BY SIDE**10** TWO BY TWO**11** HALF THE PRICE

► Write in the counting and clap the rhythm before you play.

12 CARDIFF BY THE SEA

Page 39

Welsh Folk Song

**13** TWO FOR THE SHOW - Duet**14** GO FOR EXCELLENCE!

QUARTER NOTE



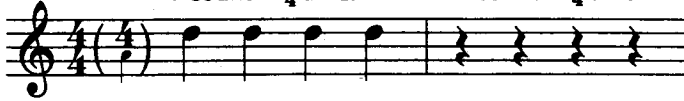
QUARTER REST



PHRASE

Each quarter note gets 1 count in 4/4 time.

Each quarter rest gets 1 count in 4/4 time.



A phrase is a musical thought or sentence. Phrases are usually four or eight measures long.

15 A QUARTER'S WORTH



▶ Write in the counting and clap the rhythm before you play.

16 HOT CROSS BUNS

English Folk Song



17 AU CLAIRE DE LA LUNE



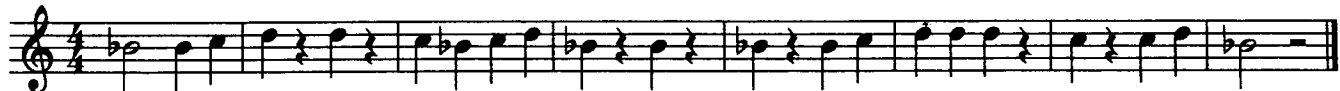
French Folk Song



▶ Draw in a breath mark at the end of each phrase.

18 DOWN BY THE STATION

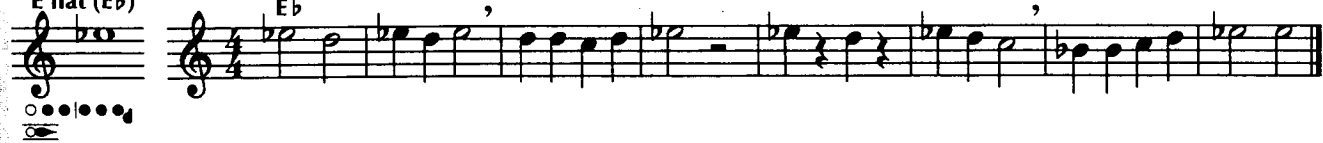
Traditional



19 EASY STREET

E flat (Eb)

Eb



20 COUNTRY WALK

English Folk Song



21 GETTIN' IT TOGETHER

F

F



22 FOR FLUTES ONLY



REPEAT SIGN



Repeat from the beginning.

COMMON TIME



$C = \frac{4}{4}$
Common time means the same as $\frac{4}{4}$ time.

FERMATA



Hold the note or rest longer than its usual value.

SOLO One person plays.

SOLI Whole section plays.

TUTTI Everyone plays.

23 MERRILY WE ROLL ALONG



Page 39

Traditional



► Write in the note names before you play.

24 LIGHTLY ROW- Duet

Traditional



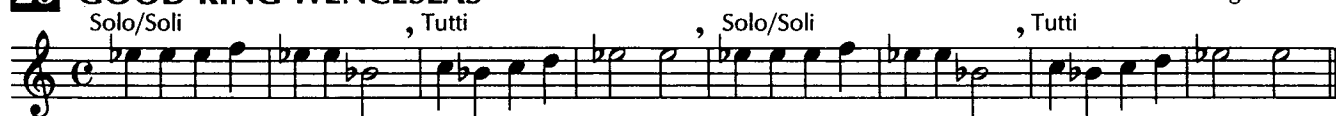
25 ONE STEP AT A TIME



► Write in the counting and clap the rhythm before you play.

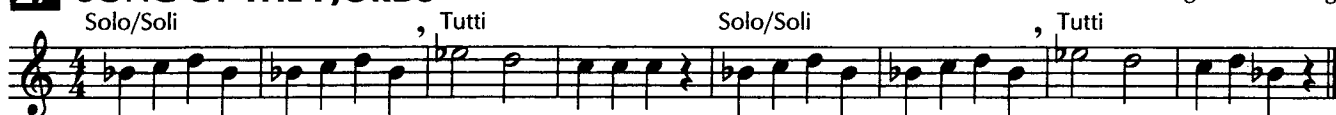
26 GOOD KING WENCESLAS

Traditional English Carol



27 SONG OF THE FJORDS

Norwegian Folk Song



28 _____

Composer _____ your name



► Fill in the rest of the measures using the given rhythms and any notes you know. Title and play your composition.

29 GO FOR EXCELLENCE!



TIE



A tie is a curved line that connects two notes of the same pitch. Tied notes are played as one unbroken note.

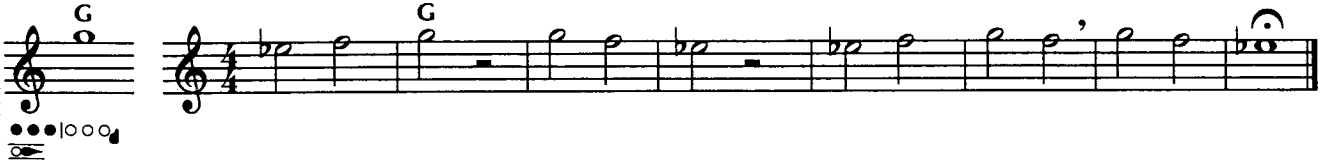
TIME SIGNATURE



$\frac{2}{4}$ = 2 counts in each measure
 $\frac{2}{4}$ = quarter note gets one count



30 WARM-UP



31 TIED AND TRUE



32 JOLLY OLD ST. NICHOLAS - Duet

American Carol



33 AMIGOS

Mexican Folk Song



▶ Keep on playing!

▶ Write in the counting and clap the rhythm before you play.

34 FARM OUT

Traditional



35 FOR FLUTES ONLY



▶ Keep your fingers close to the keys.

KEY SIGNATURE



Key signatures change certain notes throughout a piece of music. This key signature means play all B's as B flats and all E's as E flats.

36 MARK TIME



► For lower notes, make your lip opening larger and direct your air stream lower.

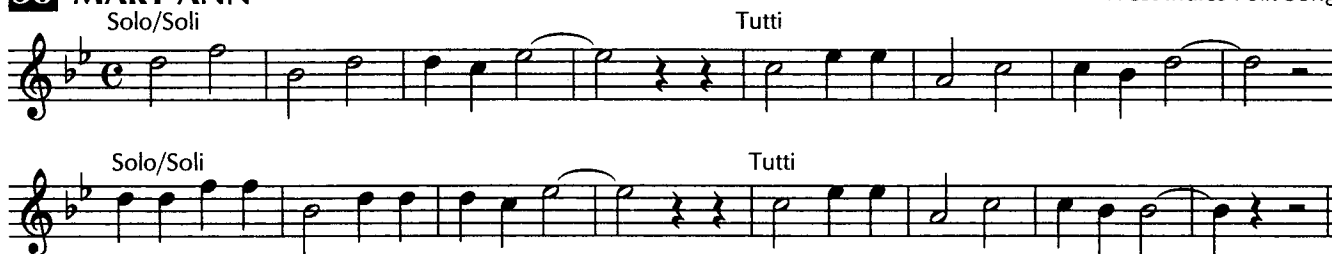
37 SWEETLY SINGS THE DONKEY - Round

Traditional



38 MARY ANN

West Indies Folk Song



► Write in the note names before you play.

39 CRUSADER'S MARCH



Page 39

Traditional



► Write in the counting and clap the rhythm before you play.

40 BALANCE THE SCALES

Draw one note or one rest to balance each scale.

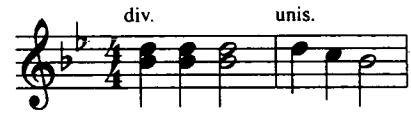


41 GO FOR EXCELLENCE!



DIVISI

Part of the section plays the top notes and part of the section plays the bottom notes.



UNISON

Everyone plays the same notes.

BALANCE BUILDER



JINGLE BELLS

Band Arrangement

J. S. Pierpont (1822 - 1893)
arr. Chuck Elledge (b. 1961)



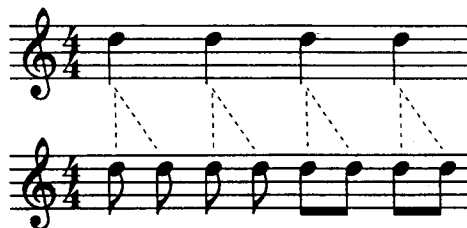
42 SCHOOL SONG



43 FOR FLUTES ONLY



EIGHTH NOTES



Two eighth notes are as long as a quarter note.



$\frac{1}{2} + \frac{1}{2} = 1$ count

Each eighth note gets $\frac{1}{2}$ count in $\frac{2}{4}$ and $\frac{4}{4}$ time.

44 WARM-UP



45 EIGHTH NOTE ENCOUNTER

► Write in the counting for the top line before you play.

46 JIM ALONG JOSIE



American Folk Song



47 EIGHTH NOTE EXPLORER

► Write in the counting for the top line before you play.

48 GO TELL BILL

Giacchino Rossini (1792 - 1868)

49 GO FOR EXCELLENCE!



50 EIGHTH-NOTE EXPRESS

► Write in the counting for the top line before you play.

51 SKIP IT, LOU

American Folk Song

52 EIGHTH NOTE EXPERT

► Write in the counting for the top line before you play.

53 MEXICAN MOUNTAIN SONG

Mexican Folk Song

54 BAFFLING BAR LINES

► Write in the counting and draw in the bar lines before you play.

55 FOR FLUTES ONLY

► For higher notes, make your lip opening smaller and direct your air stream higher.

SLUR

A curved line that connects two or more notes of different pitches.

PICK-UP NOTE

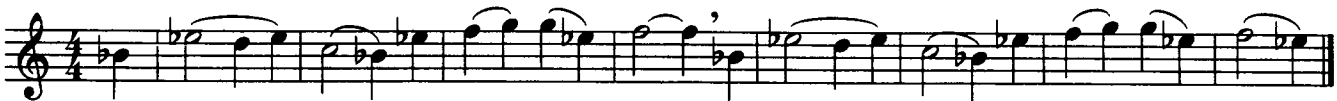
A note that comes before the first full measure of a piece of music.

56 WARM-UP

► Tongue only the first note of each slur.

57 THEME FROM "SYMPHONY NO. 1"

Johannes Brahms (1833 - 1897)

**58 ERIE CANAL CAPERS** Page 40

American Work Song

**59 LAUGHING SONG - Round**

Traditional

**60 STAR SEARCH**

Wolfgang Amadeus Mozart (1756 - 1791)



► Draw in the missing notes for "Twinkle, Twinkle, Little Star" before you play.

61 GO FOR EXCELLENCE!

KEY SIGNATURE



This key signature means play all B's as B flats, all E's as E flats, and all A's as A flats.

62 CLIMBING STAIRS

A flat (A \flat)

63 BINGO



American Folk Song

64 THERE'S MUSIC IN THE AIR

George F. Root (1820 - 1895)

65 THERE'S THE SAME MUSIC IN THE AIR

George F. Root (1820 - 1895)

▶ Circle the notes changed by the key signature.

66 SCALE SKILL

67 FOR FLUTES ONLY



DOTTED HALF NOTE



A dot after a note adds half the value of the note.

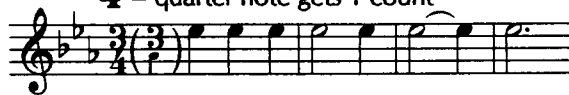
$$\text{dotted half note} = \text{half note} + \text{quarter note} = \text{half note} + \text{quarter note}$$

$$2 + 1 = 2 + 1 = 3 \text{ counts}$$

TIME SIGNATURE



$\frac{3}{4}$ = 3 counts in each measure
 $\frac{3}{4}$ = quarter note gets 1 count



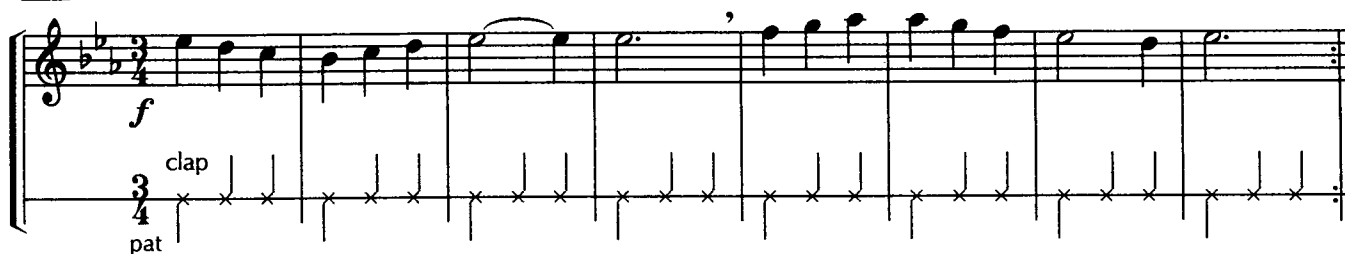
DYNAMICS

forte (f) - loud
piano (p) - soft

68 WARM-UP



69 CHANNEL THREE



► Write in the counting for the top line before you play.

70 DOWN IN THE VALLEY



American Mountain Song



71 BROTHER MARTIN - Round

Latin American Folk Song



72 THE LITTLE FISH

Australian Folk Song



► Draw in a breath mark at the end of each phrase.

73 GO FOR EXCELLENCE!



Czech Folk Song

"When Love Is Kind"



NATURAL



A natural sign cancels a flat or a sharp. It remains in effect for the entire measure.

74 WARM-UP

A flat (Ab)

75 OLD BLUE

Solo/Scii

Traditional

76 THIRD TIME AROUND

► Circle the notes changed by the key signature.

77 LULLABY - Duet

Traditional

78 MINUTEMAN MARCH



Robert Frost (b. 1942)

79 FOR FLUTES ONLY

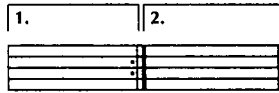


ACCENT



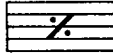
Attack the note louder.

1st and 2nd ENDINGS



Play the first ending the first time through. Then, repeat the music, skip the first ending, and play the second ending.

ONE-MEASURE REPEAT SIGN



Repeat the previous measure.

80 MEXICAN HAT DANCE

Mexican Folk Song

Musical score for Mexican Hat Dance. It features a treble clef, a key signature of two flats (B-flat and E-flat), and a 3/4 time signature. The melody is marked with dynamics *f* and *p*. There are two first endings and one second ending, each with an accent (>) over the final note. A 'clap' instruction is shown in the bass line with rhythmic markings.

81 FRÈRE JACQUES - Round

French Folk Song

Musical score for Frère Jacques. It features a treble clef, a key signature of two flats, and a common time signature. The melody is marked with dynamics *f* and includes first, second, third, and fourth endings, each with an accent (>) over the final note.

82 MORNING MOOD



Edvard Grieg (1843 - 1907)

Musical score for Morning Mood. It features a treble clef, a key signature of two flats, and a 3/4 time signature. The melody is marked with dynamics *p* and includes a slur over a group of notes.

83 MING COURT

Chinese Folk Song

Musical score for Ming Court. It features a treble clef, a key signature of two flats, and a 2/4 time signature. The melody is marked with dynamics *p* and includes a slur over a group of notes.

► Write an S under each slur and a T under the tie before you play.

84 GO FOR EXCELLENCE!



Musical score for Go for Excellence!. It features a treble clef, a key signature of two flats, and a 4/4 time signature. The melody is marked with dynamics *f* and includes a slur over a group of notes.

SAWMILL CREEK

Solo with Piano Accompaniment

Bruce Pearson (b. 1942)

Flute

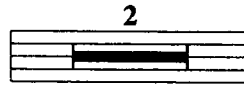
Piano

1 2 3 4 5 6 1. 2. 3. 4. 5. 6. 7. 8. 9. 10. 11. 12. 13. 14. 15. 16. 17. 18. 19. 20. 21. 22. 23. 24. 25. > >

p *f* *p* *f* *f* *f*

▶ Go back to the first repeat sign. ↑

LONG REST



Count: 1 2 3 4 2 2 3 4

Rest the number of measures indicated.

MONTEGO BAY Band Arrangement

Calypso Song
arr. Chuck Elledge (b. 1961)

1-4 4 5 div. 6 7 unis. 8 9 div. unis.

10 div. 11 12 13-14 2 15 unis. 16

17-18 2 19 div. 20 unis. 21 div. 22

23 24 25 26 27 unis. 28 1.

29 2. 30 31 div. 32 unis. 33 34

f *f* *p* 1st time - *f* 2nd time - *p*

REGAL MARCH Band Arrangement

Bruce Pearson (b. 1942)
arr. Chuck Elledge (b. 1961)

1-2 2 3 4 5 6

7 8 9 1. 10 11 2. 12

13 div. 14 15 16 17 18

19 unis. 20 21 22 23 24

25 div. 26 27 unis. 28 29 div. 30

f *p* *f*

85 WARM-UP

► Move your lower jaw and lips back for lower notes.

86 FULL OF HOT AIR

87 DANZA GIOVANNI



Italian Folk Song

88 Bb MAJOR SCALE SKILL Page 40

89 THE MAN ON THE FLYING TRAPEZE

George Leybourne (1842 - 1884)

90

Composer _____ your name

► Using the given rhythms, draw in notes to complete the melody. Title and play your composition.

91 FOR FLUTES ONLY



KEY SIGNATURE



This key signature means play all B's as B flats.

92 LOOK SHARP

93 AURA LEE

G. R. Poulton (d. 1867)

94 BARCAROLLE

Jacques Offenbach (1819 - 1880)

95 JUST BY ACCIDENT



96 F MAJOR SCALE SKILL

97 SAILOR'S SONG

Solo/Soli

Tutti

► For lower notes, make your lip opening larger and direct your air stream lower.

98 GO FOR EXCELLENCE!



American Folk Song

DA CAPO AL FINE (D. C. AL FINE)

Go back to the beginning and play until the *Fine*.

SHARP



A sharp (#) raises the pitch of a note one half step. It remains in effect for the entire measure.

99 WARM-UP



100 IN THE POCKET



101 POCKET CHANGE



102 STRICTLY BUSINESS



103 SMOOTH SAILING



104 ROSES FROM THE SOUTH



Johann Strauss, Jr. (1825 - 1899)



105 THEME FROM "HANSEL AND GRETEL"

Engelbert Humperdinck (1854 - 1921)
D.C. al Fine



106 FOR FLUTES ONLY



Page 40



107 THAT'S A WRAP

Musical notation for 'That's a Wrap' in 4/4 time, key of B-flat major. The melody is written on a single staff with a dynamic marking of *f* (forte).

108 POLLY WOLLY DOODLE

American Folk Song

Musical notation for 'Polly Wolly Doodle' in 4/4 time, key of B-flat major. The melody is on a single staff with a dynamic marking of *f*. The accompaniment is on a second staff, consisting of 'clap' (marked with 'x') and 'foot stomp' (marked with a vertical line) symbols.

Continuation of the musical notation for 'Polly Wolly Doodle', showing first and second endings for both the melody and the accompaniment.

109 VOLGA BOAT SONG

Russian Folk Song

Musical notation for 'Volga Boat Song' in 4/4 time, key of B-flat major. The melody is written on a single staff with a dynamic marking of *f*.

110

Composer _____ your name

Musical notation for 'Hand Clappers' and 'Knee Slappers' in 4/4 time. The top staff is for 'Hand Clappers' and the bottom staff is for 'Knee Slappers'. The first measure of the 'Knee Slappers' part is pre-completed. Dynamic markings include *f* and *p*.

► Compose a duet (accompaniment) part for Knee Slappers. The first measure has been completed for you. Title and perform your composition.

111 GO FOR EXCELLENCE!



Tielman Susato (1500? - 1561?)

Musical notation for 'Ronde' in 4/4 time, key of B-flat major. The melody is written on two staves. Dynamic markings include *f* and *p*.

SINGLE EIGHTH NOTE



A single eighth note is half as long as a quarter note.

$$\text{♪} = 1/2 \text{ count}$$

DOTTED QUARTER NOTE



A dot after a note adds half the value of the note.

$$\text{♪} + \text{.} = \text{♪} + \text{♪} = \text{♪}$$

$$1 + 1/2 = 1 + 1/2 = 1 \frac{1}{2} \text{ counts}$$

112 WARM-UP - Band Arrangement

113 SHORT CUT

► Write in the counting for the top line before you play.

114 SPOT THE DOTS

► Feel the pulse of three eighth notes during each dotted quarter note.

115 ALL THROUGH THE NIGHT



Welsh Folk Song

116 ALOUETTE

French-Canadian Folk Song

117 FOR FLUTES ONLY



118 JUST A LITTLE OFF THE TOP

► For higher notes, make your lip opening smaller and direct your air stream higher.

119 TOP DRAWER - Duet

120 HOME ON THE RANGE Page 41

Daniel E. Kelley (1843 - 1905)

► Circle the notes changed by the key signature.

121 THE CONQUERING HERO - Duet

George Frideric Handel (1685 - 1759)

122 GO FOR EXCELLENCE!

TEMPOS

Andante - moderately slow
Moderato - moderate speed
Allegro - quick and lively

DYNAMICS

mezzo forte (mf) - medium loud
mezzo piano (mp) - medium soft

123 WARM-UP - Band Arrangement

Andante
div.

mf

124 HIGH WINDS AHEAD

Andante

f

125 LOOK BEFORE YOU LEAP

Moderato

f

126 Eb MAJOR SCALE SKILL 

Allegro

mf

Arpeggio

Chords
div.

127 VARIATIONS ON A THEME BY MOZART

Wolfgang Amadeus Mozart (1756 - 1791)

Moderato

Theme (main melody)

Variation 1 (time signature changes)

Variation 2 (rhythm changes)

Variation 3 (melody changes)

mp

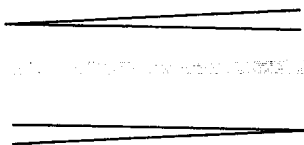
128 FOR FLUTES ONLY 

Andante

f

► For higher notes, make your lip opening smaller and direct your air stream higher.

DYNAMICS

*crescendo* - Gradually play louder.*decrescendo* - Gradually play softer.**129** SLIPPERY SLURS

Andante

**130** WALTZ STREET

Moderato

**131** THEME FROM "SYMPHONY NO. 9"

Ludwig van Beethoven (1770 - 1827)

Moderato

**132** READY OR NOT

Andante

**133** ACH! DU LIEBER AUGUSTINE

Page 41

German Folk Song

Allegro

**134** GO FOR EXCELLENCE!

Moderato



► Play using each of the following articulations: A.  B.  C. 

BALANCE BUILDER

1 Tonic 2 3 Subdominant 4 5 Dominant 6 7 Tonic

TRUMPET VOLUNTARY

Band Arrangement

Jeremiah Clarke (1674? - 1707)
arr. Bruce Pearson (b. 1942)

Moderato

1 2 3 4 5 6

f

7 8 9 10 11 12

13 - 16

4 17 div. 18 19

mp

20 21 22 23 24

f

25 26 27 unis. 28 29 30

mp f

31 32 div. 33 34 unis. 35

36 37 div. 38 39 unis. 40

mf mp

41 42 43 44 45 46

f

TEMPO

Ritardando (ritard. or rit.) - Gradually slow the tempo.

135 SAKURA - Duet

Japanese Folk Song

Andante

Musical score for 'Sakura - Duet' in 4/4 time, key of B-flat major. It consists of three systems of two staves each. The first system is marked 'mp' and includes parts 'A.' and 'B.'. The second system shows dynamics changing from 'mf' to 'mp' and back to 'mf'. The third system includes 'rit.' markings and ends with a 'p' dynamic. A breath mark is indicated at the end of the first phrase in the first system.

▶ Draw in a breath mark at the end of each phrase.

136 GRANDFATHER'S WHISKERS



American Folk Song

Moderato

Musical score for 'Grandfather's Whiskers' in 2/4 time, key of B-flat major. It consists of two systems of one staff each. The first system is marked 'mf'. The second system includes first and second endings and ends with the word 'Hey!'.

137 TWINKLE VARIATION

Wolfgang Amadeus Mozart (1756 - 1791)

Theme

Musical score for the 'Theme' of 'Twinkle Variation' in 4/4 time, key of B-flat major. It consists of one staff marked 'mf'. Below the staff, there is a line for the composer's name: 'Composer _____ your name'.

Variation

An empty musical staff provided for the student to compose a variation on the theme.

▶ Compose a variation on "Twinkle, Twinkle, Little Star."

138 PARTNER SONGS - Duet

American Spirituals

Andante
 "Swing Low, Sweet Chariot"
p *mf*

p *mf*
 "All Night, All Day"

1. 2.

p *p*

139 MANHATTAN BEACH MARCH



Page 41

John Philip Sousa (1854 - 1932)

Allegro
 Introduction Theme
f

1. 2.

140 DYNAMIC DECISION

Write in the following dynamics from softest to loudest: *mezzo-forte* *piano* *forte* *mezzo piano*

softest ← → loudest

141 FOR FLUTES ONLY



Moderato
mf

TEMPO

Largo - slow

142 "LARGO" FROM THE NEW WORLD SYMPHONY



Antonin Dvořák (1841 - 1904)

Largo

143 JUST FINE



Moderato

144 CHORALE - Duet

Lowell Mason (1792 - 1872)

Largo

145 TEMPO TIME

Write in the following tempos from slowest to fastest: **Andante** **Allegro** **Moderato** **Largo**

slowest ←

→ fastest

146 GO FOR EXCELLENCE!



Allegro

147 RICOCHET ROCK

Chuck Elledge (b. 1961)

Allegro

Musical score for 'RICOCHET ROCK' in 4/4 time, key of B-flat major. The score consists of two systems. The first system starts with a dynamic marking of *f* and includes a 'clap' instruction. The melody features eighth-note patterns with accents and slurs. The second system continues the melody and includes a repeat sign. The piece concludes with a fermata over the final note.

148 LOCH LOMOND



Scottish Folk Song

Moderato

Musical score for 'LOCH LOMOND' in 6/8 time, key of B-flat major. The score consists of two systems. The first system starts with a dynamic marking of *mp* and includes a crescendo leading to a dynamic marking of *f*. The second system continues the melody and includes a decrescendo leading to a dynamic marking of *mp*. The piece concludes with a fermata over the final note.

149 SHALOM, CHAVERIM

Hebrew Folk Song

Andante

Musical score for 'SHALOM, CHAVERIM' in 4/4 time, key of B-flat major. The score consists of two systems. The first system starts with a dynamic marking of *p*. The second system includes first and second endings, marked '1.' and '2.', leading to a final cadence.

▶ Draw in a breath mark at the end of each phrase.

150

Composer _____ your name

Musical score for exercise 150 in 4/4 time, key of B-flat major. The score consists of a single system with a melody that ends with a fermata over the final note.

▶ Compose an ending for this melody. Title and play your composition.

151 FOR FLUTES ONLY



Moderato

Musical score for 'FOR FLUTES ONLY' in 6/8 time, key of B-flat major. The score consists of a single system with a melody that features slurs and a dynamic marking of *mf*.

▶ Move your lower jaw and lips forward for higher tones and backward for lower tones.

152 GRANDFATHER'S CLOCK

Henry C. Work (1832 - 1884)

Moderato

mf

Fine

D.C. al Fine

The musical score for 'Grandfather's Clock' is written in 2/4 time with a key signature of one flat (B-flat). It consists of two staves. The first staff begins with a treble clef, a key signature of one flat, and a 2/4 time signature. The tempo is marked 'Moderato'. The first measure is a half note B-flat. The melody continues with quarter notes and eighth notes. A dynamic marking of *mf* is placed below the first staff. The piece concludes with a double bar line and a repeat sign, followed by a *Fine* marking. The second staff begins with a treble clef, a key signature of one flat, and a 2/4 time signature. It continues the melody from the first staff. A dynamic marking of *mf* is placed below the first measure. The piece concludes with a double bar line and a *D.C. al Fine* marking.

▶ Circle the note changed by the key signature.

153 KUM BA YAH

African Folk Song

Largo

p

The musical score for 'Kum Ba Yah' is written in 4/4 time with a key signature of one flat (B-flat). It consists of two staves. The first staff begins with a treble clef, a key signature of one flat, and a 4/4 time signature. The tempo is marked 'Largo'. The first measure is a half note B-flat. The melody continues with quarter notes and half notes. A dynamic marking of *p* is placed below the first staff. The second staff continues the melody with quarter notes and half notes. The piece concludes with a double bar line.

154 GRANT US PEACE - Round

German Canon

Andante

1.

mp

2.

3.

The musical score for 'Grant Us Peace - Round' is written in 3/4 time with a key signature of one flat (B-flat). It consists of three staves. The first staff begins with a treble clef, a key signature of one flat, and a 3/4 time signature. The tempo is marked 'Andante'. The first measure is a half note B-flat. The melody continues with quarter notes and eighth notes. A dynamic marking of *mp* is placed below the first staff. The second staff begins with a treble clef, a key signature of one flat, and a 3/4 time signature. It starts with a '2.' marking. The melody continues with quarter notes and eighth notes. The third staff begins with a treble clef, a key signature of one flat, and a 3/4 time signature. It starts with a '3.' marking. The melody continues with quarter notes and eighth notes. The piece concludes with a double bar line.

155 GO FOR EXCELLENCE!

Moderato

mf

p *mf* *p* *mf* *p* *f* *mp*

The musical score for 'Go for Excellence!' is written in 4/4 time with a key signature of one flat (B-flat). It consists of two staves. The first staff begins with a treble clef, a key signature of one flat, and a 4/4 time signature. The tempo is marked 'Moderato'. The first measure is a half note B-flat. The melody continues with quarter notes and eighth notes. A dynamic marking of *mf* is placed below the first staff. The second staff begins with a treble clef, a key signature of one flat, and a 4/4 time signature. It continues the melody with quarter notes and eighth notes. Dynamic markings are placed below the staff: *p* *mf* *p* *mf* *p* *f* *mp*. The piece concludes with a double bar line.

MINUET

Solo with Piano Accompaniment

Johann Sebastian Bach
(1685 - 1750)

1 Moderato

Flute

Piano

p *mp*

2 3 4

5 6 7 8 9 10

11 12 13 14 15

16 17 18 19 20

21 *mp* 22 23 24

4 2
mp
2 1 1

25 26 27 28 29 *mf*

1 1 4 3
mf
3

30 31 32 33

5 4 3 2 3
1 1 1
1

34 35 36 37 38 *mp* *p*

1. 2. *mp* *p*
2 1. 3 2. 2 5
mp *p*
2

ROCKIN' RONDEAU

Band Arrangement

Based on a theme by
Jean-Joseph Mouret (1682 - 1738)
arr. Chuck Elledge (b. 1961)

Moderato

1-3 3 4 5 6

mf

7 div. 8 9 10 unis. div.

11 1. 12 unis. 13 2. 14

15-17 3 18 19 20-21 2 22 unis.

p *mp* *mf*

23 24 25 div.

26 unis. 27 28 div. 29 *f*

rit.

Allegro

30-33 4 34 unis. 35 div. 36 unis.

mf

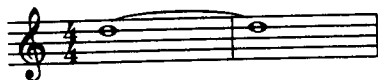
37 38 39 40 *f*

41 div. 42 43 44 unis.

45 div. 46 47 48 *rit.*

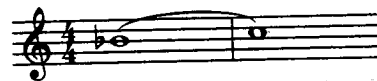
EXCELLERATORS-FOR FLUTES ONLY

TIE



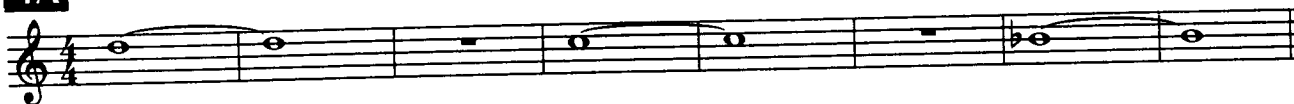
A tie is a curved line that connects two notes of the same pitch. Tied notes are played as one unbroken note.

SLUR



A slur is a curved line that connects two or more notes of different pitches. Tongue only the first note of a slur.

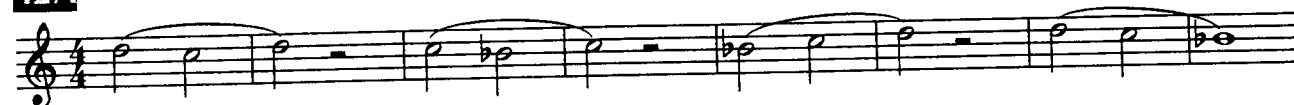
4A



4B



12A



12B



23A



23B



39A



39B



39C





EXCELLERATORS- FOR FLUTES ONLY

58A**58B****88A****88B****106A****106B**

EXCELLERATORS-FOR FLUTES ONLY

120A

120B

133A

133B

139A

139B