

FOR FRENCH HORNS ONLY

TREBLE CLEF



TIME SIGNATURE



WHOLE NOTE



WHOLE REST



$\frac{4}{4}$ = 4 counts in each measure

A whole note gets 4 counts in $\frac{4}{4}$ time. A whole rest gets 4 counts in $\frac{4}{4}$ time.

WHAT DO YOU HEAR?

When you play your instrument, you will probably play one of these two notes:

WHAT NEXT?

Ask your teacher which note you are playing:
If your natural note is C, start on page 4-F Hns. Only.
If your natural note is G, start on page 5-F Hns. Only.

1 THE FIRST NOTE

▶ A double bar line marks the end of the music.

The numbers indicate which valves should be pressed down. Use the top fingering if you play an F horn. Use the fingering in parentheses if you play a B \flat horn.

2 THE SECOND NOTE

3 TEA FOR TWO

4 THE THIRD NOTE

5 THREE OF A KIND

6 THREE'S COMPANY

7 TOP BRASS

FOR FRENCH HORNS ONLY

TREBLE CLEF



TIME SIGNATURE



WHOLE NOTE



WHOLE REST



$\frac{4}{4}$ = 4 counts in each measure

A whole note gets 4 counts in $\frac{4}{4}$ time. A whole rest gets 4 counts in $\frac{4}{4}$ time.

1 THE FIRST NOTE

▶ A double bar line marks the end of the music. ↑

The numbers indicate which valves should be pressed down. Use the top fingering if you play an F horn. Use the fingering in parentheses if you play a B \flat horn.

2 THE SECOND NOTE

3 TEA FOR TWO

4 THE THIRD NOTE

5 THREE OF A KIND

6 THREE'S COMPANY

7 TOP BRASS

FOR BRASS ONLY

TREBLE CLEF



TIME SIGNATURE



WHOLE NOTE



WHOLE REST



$\frac{4}{4}$ = 4 counts in each measure

A whole note gets 4 counts in $\frac{4}{4}$ time.

A whole rest gets 4 counts in $\frac{4}{4}$ time.

1 THE FIRST NOTE

▶ A double bar line marks the end of the music.

The numbers indicate which valves should be pressed down. Use the top fingering if you play an F horn. Use the fingering in parentheses if you play a B \flat horn.

2 THE SECOND NOTE

3 TEA FOR TWO

4 THE THIRD NOTE

5 THREE OF A KIND

6 THREE'S COMPANY

7 TOP BRASS

FOR BRASS ONLY

**TREBLE
CLEF**



**TIME
SIGNATURE**



**WHOLE
NOTE**



**WHOLE
REST**

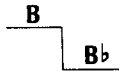


4/4 = 4 counts in each measure

A whole note gets 4 counts in 4/4 time.

A whole rest gets 4 counts in 4/4 time.

FLAT

A flat (b) lowers the pitch of a note one half step. It remains in effect for the entire measure.

1 THE FIRST NOTE

↑ A double bar line marks the end of the music.

The numbers indicate which valves should be pressed down.

Use the top fingering if you play an F horn. Use the fingering in parentheses if you play a Bb horn.

2 THE SECOND NOTE

B flat (Bb)

3 TEA FOR TWO

4 THE THIRD NOTE

A

5 THREE OF A KIND

6 THREE'S COMPANY

7 TOP BRASS

FOR THE FULL BAND

TREBLE CLEF



TIME SIGNATURE



WHOLE NOTE



WHOLE REST



$\frac{4}{4}$ = 4 counts in each measure

Measures

Staff

Ledger Line

Bar Lines

A whole note gets 4 counts in $\frac{4}{4}$ time.

A whole rest gets 4 counts in $\frac{4}{4}$ time.

1 TIME FOR BAND

▶ A double bar line marks the end of the music.

The numbers indicate which valves should be pressed down. Use the top fingering if you play an F horn. Use the fingering in parentheses if you play a B \flat horn.

2 THE FUN CONTINUES

3 WHOLE LOTTA COUNTING

▶ Write in the counting and clap the rhythm before you play.

4 FOUR SCORE Page 39

▶ When you see a page number followed by an arrow, *Excellerate* to the page indicated for additional studies.

5 MIX 'EM UP

6 MELTING POT

7 BAND ON PARADE

▶ Lines with a medal are *Achievement Lines*. The chart on page 47 can be used to record your progress.

HALF NOTE



HALF REST



BREATH MARK



Each half note gets 2 counts in 4/4 time.

Each half rest gets 2 counts in 4/4 time.



Take a breath.

8 A BREATH OF FRESH AIR



► Be sure to take a full breath of air.

9 SIDE BY SIDE



10 TWO BY TWO



11 HALF THE PRICE



► Write in the counting and clap the rhythm before you play.

12 CARDIFF BY THE SEA



Page 39

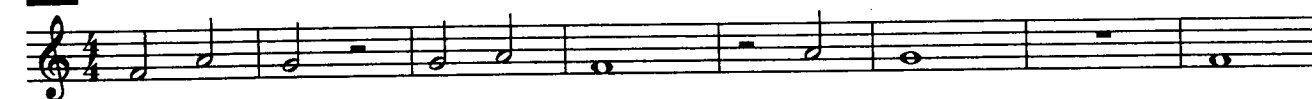
Welsh Folk Song



13 TWO FOR THE SHOW - Duet



14 GO FOR EXCELLENCE!



QUARTER NOTE



QUARTER REST



PHRASE

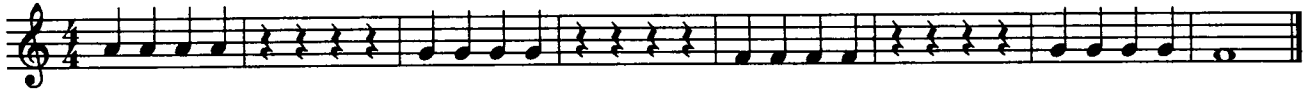
Each quarter note gets 1 count in 4/4 time.

Each quarter rest gets 1 count in 4/4 time.



A phrase is a musical thought or sentence. Phrases are usually four or eight measures long.

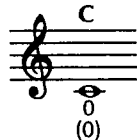
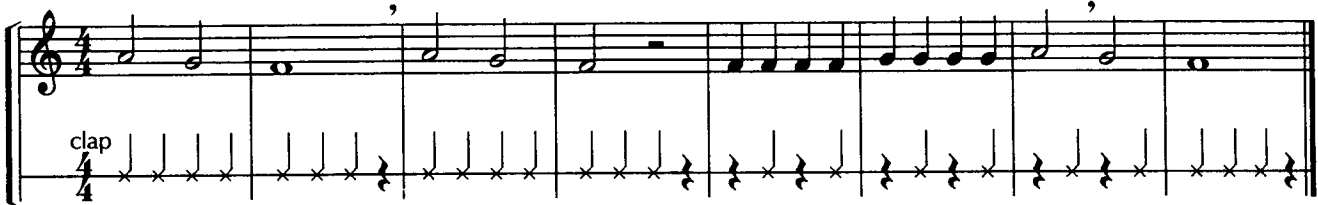
15 A QUARTER'S WORTH



► Write in the counting and clap the rhythm before you play.

16 HOT CROSS BUNS

English Folk Song



16 HOT CROSS BUNS - For French Horns Only



17 AU CLAIRE DE LA LUNE



French Folk Song



► Draw in a breath mark at the end of each phrase.

18 DOWN BY THE STATION

Traditional



FLAT

b



A flat (b) lowers the pitch of a note one half step. It remains in effect for the entire measure.

19 EASY STREET

B flat (Bb)

(1)

also played Bb

The musical notation for 'EASY STREET' is in 4/4 time with a B flat key signature. It starts with a whole note chord of Bb and F. The melody consists of quarter and eighth notes. An upward-pointing arrow indicates a note that is also played as Bb.

19 EASY STREET - For French Horns Only

The musical notation for 'EASY STREET - For French Horns Only' is in 4/4 time with a B flat key signature. It features a melody of quarter and eighth notes.

20 COUNTRY WALK

English Folk Song

The musical notation for 'COUNTRY WALK' is in 4/4 time with a B flat key signature. It features a melody of quarter and eighth notes.

20 COUNTRY WALK - For French Horns Only

The musical notation for 'COUNTRY WALK - For French Horns Only' is in 4/4 time with a B flat key signature. It features a melody of quarter and eighth notes.

21 GETTIN' IT TOGETHER

(0)

The musical notation for 'GETTIN' IT TOGETHER' is in 4/4 time with a C major key signature. It starts with a whole note chord of C. The melody consists of quarter and eighth notes.

21 GETTIN' IT TOGETHER - For French Horns Only

The musical notation for 'GETTIN' IT TOGETHER - For French Horns Only' is in 4/4 time with a C major key signature. It features a melody of quarter and eighth notes.

22 FOR FRENCH HORNS ONLY

The musical notation for 'FOR FRENCH HORNS ONLY' is in 4/4 time with a C major key signature. It features a melody of quarter and eighth notes.

REPEAT SIGN



Repeat from the beginning.

COMMON TIME



$$C = \frac{4}{4}$$

Common time means the same as $\frac{4}{4}$ time.

FERMATA



Hold the note or rest longer than its usual value.

23 MERRILY WE ROLL ALONG



Page 39

Traditional



► Write in the note names before you play.

23 MERRILY WE ROLL ALONG - For French Horns Only



Page 39



24 LIGHTLY ROW - Duet

Traditional



25 ONE STEP AT A TIME



► Write in the counting and clap the rhythm before you play.

25 ONE STEP AT A TIME - For French Horns Only



SOLO

One person plays.

SOLI

Whole section plays.

TUTTI

Everyone plays.

26 GOOD KING WENCESLAS

Traditional English Carol

Solo/Soli , Tutti , Solo/Soli , Tutti

26 GOOD KING WENCESLAS - For French Horns Only

27 SONG OF THE FJORDS

Norwegian Folk Song


Solo/Soli , Tutti Solo/Soli , Tutti

28 _____

Composer _____ your name

► Fill in the rest of the measures using the given rhythms and any notes you know. Title and play your composition.

29 GO FOR EXCELLENCE! 

29 GO FOR EXCELLENCE! - For French Horns Only 

TIE



A tie is a curved line that connects two notes of the same pitch. Tied notes are played as one unbroken note.

30 WARM-UP

B flat (B \flat) D D

(1) 0 (1 2) B \flat

► Play both octaves on your French horn. Then, try playing this warm-up on your mouthpiece.

30 WARM-UP - For French Horns Only

31 TIED AND TRUE



31 TIED AND TRUE - For French Horns Only



32 JOLLY OLD ST. NICHOLAS - Duet

American Carol

32 JOLLY OLD ST. NICHOLAS - Duet - For French Horns Only

TIME SIGNATURE

2
42 = 2 counts in each measure
4 = quarter note gets 1 count**33** AMIGOS

Mexican Folk Song

▶ Write in the counting and clap the rhythm before you play.

33 AMIGOS - For French Horns Only

34 FARM OUT

Traditional

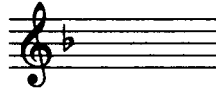
34 FARM OUT - For French Horns Only

35 FOR FRENCH HORNS ONLY

KEY SIGNATURES



Key signatures change certain notes throughout a piece of music. This is the key signature you've been playing so far.



This key signature means play all B's as B flats.

36 MARK TIME



36 MARK TIME - For French Horns Only



37 SWEETLY SINGS THE DONKEY - Round

Traditional



38 MARY ANN

West Indies Folk Song



► Write in the note names before you play.

38 MARY ANN - For French Horns Only



39 CRUSADER'S MARCH



Page 39

Traditional

Musical notation for Crusader's March, featuring a treble clef, a key signature of one flat (B-flat), and a 4/4 time signature. The melody consists of eighth and quarter notes with various rests and accents.

▶ Write in the counting and clap the rhythm before you play.

39 CRUSADER'S MARCH - For French Horns Only



Page 39

Musical notation for Crusader's March - For French Horns Only, featuring a treble clef, a key signature of one flat (B-flat), and a 4/4 time signature. The melody is adapted for the French horn range.

40 BALANCE THE SCALES

Draw one note or one rest to balance each scale.

Five scale balancing exercises on a five-line staff. Each exercise has a triangle under the staff. The first four exercises have notes above the staff: 1) quarter note, quarter rest; 2) quarter note, quarter rest; 3) quarter note, quarter rest; 4) quarter note, quarter rest, quarter note, quarter rest. The fifth exercise has a quarter rest above the staff.

41 GO FOR EXCELLENCE!



Two staves of musical notation for Go for Excellence!, featuring a treble clef, a key signature of one flat (B-flat), and a 2/4 time signature. The melody consists of eighth and quarter notes with various rests and accents.

41 GO FOR EXCELLENCE! - For French Horns Only



Two staves of musical notation for Go for Excellence! - For French Horns Only, featuring a treble clef, a key signature of one flat (B-flat), and a 2/4 time signature. The melody is adapted for the French horn range.

BALANCE BUILDER

Musical notation for 'BALANCE BUILDER' in 4/4 time, key of B-flat major. The piece consists of seven measures. Measure 1 is labeled 'Tonic'. Measure 2 has a fermata over the second measure. Measure 3 is labeled 'Subdominant'. Measure 4 has a fermata over the fourth measure. Measure 5 is labeled 'Dominant'. Measure 6 has a fermata over the sixth measure. Measure 7 is labeled 'Tonic'.

JINGLE BELLS

Band Arrangement

J. S. Pierpont (1822 - 1893)
arr. Chuck Elledge (b. 1961)

Measures 1-4 of 'JINGLE BELLS'. Measure 1 starts with a treble clef and a key signature of one flat. Measures 1-4 show a rhythmic pattern of quarter notes.

Measures 5-8 of 'JINGLE BELLS'. Measure 5 is boxed. Measures 5-8 continue the rhythmic pattern.

Measures 9-12 of 'JINGLE BELLS'. Measures 9-12 continue the rhythmic pattern.

Measures 13-16 of 'JINGLE BELLS'. Measure 13 is boxed. Measures 13-16 continue the rhythmic pattern.

Measures 17-20 of 'JINGLE BELLS'. Measures 17-20 continue the rhythmic pattern.

Measures 21-24 of 'JINGLE BELLS'. Measures 21-24 continue the rhythmic pattern.

42 SCHOOL SONG

Solo/Soli , Tutti

Solo/Soli , Tutti

42 SCHOOL SONG - For French Horns Only**43 FOR FRENCH HORNS ONLY**

EIGHTH NOTES



Two eighth notes are as long as a quarter note.



Each eighth note gets 1/2 count in 2/4 and 4/4 time.



$1/2 + 1/2 = 1$ count

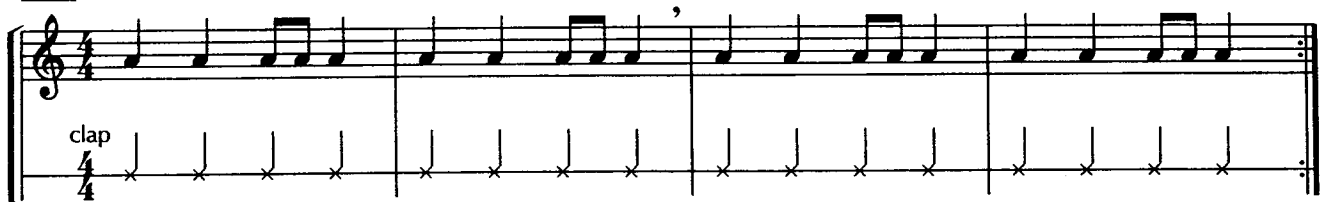
44 WARM-UP



44 WARM-UP - For French Horns Only



45 EIGHTH NOTE ENCOUNTER



► Write in the counting for the top line before you play.

46 JIM ALONG JOSIE



American Folk Song



46 JIM ALONG JOSIE - For French Horns Only



47 EIGHTH NOTE EXPLORER

Musical score for 'Eighth Note Explorer' in 4/4 time. The top staff is a treble clef with a key signature of one flat (Bb). It contains four measures of eighth-note pairs: Bb4-A4, G4-F4, E4-D4, and C4-Bb3. The bottom staff is a bass clef with a key signature of one flat, containing four measures of eighth-note claps, indicated by 'x' marks.

► Write in the counting for the top line before you play.

48 GO TELL BILL

Giacchino Rossini (1792 - 1868)

Musical score for 'Go Tell Bill' in common time (C). It consists of two staves of music. The first staff is a treble clef with a key signature of one flat. The second staff is a bass clef with a key signature of one flat. The music features eighth-note patterns and rests.

48 GO TELL BILL - For French Horns Only

Musical score for 'Go Tell Bill - For French Horns Only' in common time (C). It consists of two staves of music. The first staff is a treble clef with a key signature of one flat. The second staff is a bass clef with a key signature of one flat. The music features eighth-note patterns and rests.

49 GO FOR EXCELLENCE!

Musical score for 'Go For Excellence!' in common time (C). It consists of one staff of music in a treble clef with a key signature of one flat. The music features eighth-note patterns and rests.

49 GO FOR EXCELLENCE! - For French Horns Only

Musical score for 'Go For Excellence! - For French Horns Only' in common time (C). It consists of one staff of music in a treble clef with a key signature of one flat. The music features eighth-note patterns and rests.

50 EIGHTH NOTE EXPRESS

► Write in the counting for the top line before you play.

51 SKIP IT, LOU

American Folk Song

52 EIGHTH NOTE EXPERT

► Write in the counting for the top line before you play.

53 MEXICAN MOUNTAIN SONG



Mexican Folk Song

53 MEXICAN MOUNTAIN SONG - For French Horns Only
54 BAFFLING BAR LINES

► Write in the counting and draw in the bar lines before you play.

54 BAFFLING BAR LINES - For French Horns Only

► Write in the counting and draw in the bar lines before you play.

55 FOR FRENCH HORNS ONLY

Gustav Mahler (1860 - 1911)

Theme from "Symphony No. 1"

SLUR



A curved line that connects two or more notes of different pitches.

PICK-UP NOTE



A note that comes before the first full measure of a piece of music.

56 WARM-UP



▶ Tongue only the first note of each slur. Try playing this warm-up on your mouthpiece.

57 THEME FROM "SYMPHONY NO. 1"



Johannes Brahms (1833 - 1897)



57 THEME FROM "SYMPHONY NO. 1" - For French Horns Only



58 ERIE CANAL CAPERS Page 39

American Work Song



58 ERIE CANAL CAPERS - For French Horns Only Page 39



59 LAUGHING SONG - Round

Traditional

**60 STAR SEARCH**

Wolfgang Amadeus Mozart (1756 - 1791)



▶ Draw in the missing notes for "Twinkle, Twinkle, Little Star" before you play.

60 STAR SEARCH - For French Horns Only

▶ Draw in the missing notes for "Twinkle, Twinkle, Little Star" before you play.

61 GO FOR EXCELLENCE!**61 GO FOR EXCELLENCE! - For French Horns Only**

62 CLIMBING STAIRS

E flat (Eb) Eb ,

Musical notation for 'CLIMBING STAIRS' in E-flat major, 2/4 time. The first staff begins with a treble clef, a key signature of one flat (B-flat), and a common time signature. The first measure contains a whole note chord of E-flat major (E-flat, G, B-flat), with a '2' above and '(1)' below the notes. The second measure contains a whole note chord of E-flat major (E-flat, G, B-flat), with an 'Eb' above and a comma below. The melody consists of eighth and quarter notes, with a final measure containing a whole note chord of E-flat major (E-flat, G, B-flat).

63 BINGO

American Folk Song

Musical notation for 'BINGO' in 4/4 time. The first staff begins with a treble clef and a key signature of one flat (B-flat). The melody consists of quarter and eighth notes, with a final measure containing a whole note chord of E-flat major (E-flat, G, B-flat). The second staff continues the melody with quarter and eighth notes, ending with a whole note chord of E-flat major (E-flat, G, B-flat).

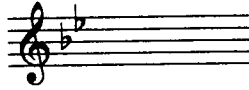
63 BINGO - For French Horns Only

Musical notation for 'BINGO - For French Horns Only' in 4/4 time. The first staff begins with a treble clef and a key signature of one flat (B-flat). The melody consists of quarter and eighth notes, with a final measure containing a whole note chord of E-flat major (E-flat, G, B-flat). The second staff continues the melody with quarter and eighth notes, ending with a whole note chord of E-flat major (E-flat, G, B-flat).

64 THERE'S MUSIC IN THE AIR

George F. Root (1820 - 1895)

Musical notation for 'THERE'S MUSIC IN THE AIR' in 4/4 time. The first staff begins with a treble clef and a key signature of one flat (B-flat). The melody consists of quarter and eighth notes, with a final measure containing a whole note chord of E-flat major (E-flat, G, B-flat).

KEY SIGNATURE

This key signature means play all B's as B flats and all E's as E flats.

65 THERE'S THE SAME MUSIC IN THE AIR

George F. Root (1820 - 1895)



► Circle the notes changed by the key signature.

66 SCALE SKILL**66 SCALE SKILL - For French Horns Only****67 FOR FRENCH HORNS ONLY**

DOTTED HALF NOTE



A dot after a note adds half the value of the note.

$$\begin{aligned} \text{♩} + \cdot &= \text{♩} + \text{♩} = \text{♩} \\ 2 + 1 &= 2 + 1 = 3 \text{ counts} \end{aligned}$$

TIME SIGNATURE



$\frac{3}{4}$ = 3 counts in each measure
 $\frac{1}{4}$ = quarter note gets 1 count



DYNAMICS

forte (f) - loud

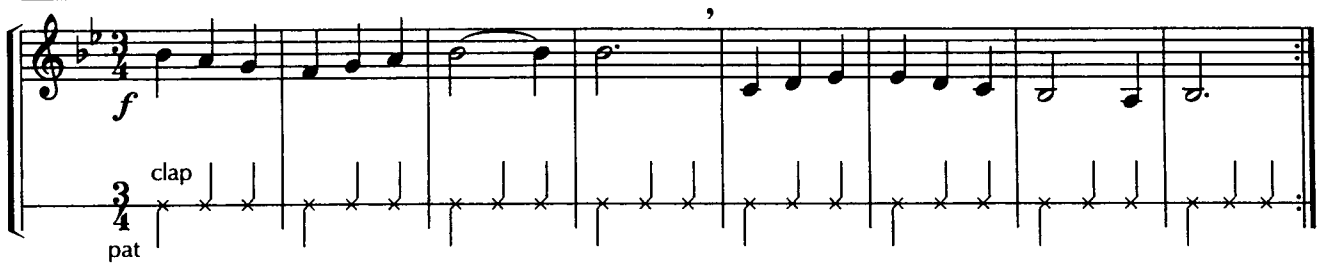
piano (p) - soft

68 WARM-UP



▶ Try playing this warm-up on your mouthpiece.

69 CHANNEL THREE



▶ Write in the counting for the top line before you play.

69 CHANNEL THREE - For French Horns Only



70 DOWN IN THE VALLEY 

American Mountain Song



70 DOWN IN THE VALLEY - For French Horns Only
71 BROTHER MARTIN - Round

Latin American Folk Song

72 THE LITTLE FISH

Australian Folk Song

▶ Draw in a breath mark at the end of each phrase.

72 THE LITTLE FISH - For French Horns Only

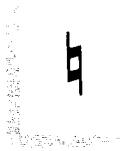
▶ Draw in a breath mark at the end of each phrase.

73 GO FOR EXCELLENCE!

Czech Folk Song

73 GO FOR EXCELLENCE! - For French Horns Only

NATURAL



A natural sign cancels a flat or a sharp. It remains in effect for the entire measure.

74 WARM-UP

► Try playing this warm-up on your mouthpiece.

75 OLD BLUE

Traditional

76 THIRD TIME AROUND

► Circle the notes changed by the key signature.

77 LULLABY - Duet Page 40 

Traditional

A. *p*

B. *p*

78 MINUTEMAN MARCH 

Robert Frost (b. 1942)

f

also played E \sharp \uparrow

p *f*

79 FOR FRENCH HORNS ONLY 

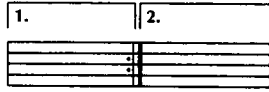
f

ACCENT



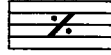
Attack the note louder.

1st and 2nd ENDINGS



Play the first ending the first time through. Then, repeat the music, skip the first ending, and play the second ending.

ONE-MEASURE REPEAT SIGN



Repeat the previous measure.

80 MEXICAN HAT DANCE

Mexican Folk Song

Musical score for Mexican Hat Dance in 3/4 time. The melody is in G minor (one flat). It features a first ending and a second ending. Dynamics include *f* (forte) and *p* (piano). The accompaniment consists of claps on the bass line.

80 MEXICAN HAT DANCE - For French Horns Only

Musical score for Mexican Hat Dance - For French Horns Only in 3/4 time. The melody is in G minor. It features a first ending and a second ending. Dynamics include *f* (forte) and *p* (piano).

81 FRÈRE JACQUES - Round

French Folk Song

Musical score for Frère Jacques - Round in C major, 3/4 time. It is a round consisting of four parts. Dynamics include *f* (forte). The score includes first and second endings for each part.

82 MORNING MOOD



Edvard Grieg (1843 - 1907)

Musical score for Morning Mood in G major, 3/4 time. The melody is in G major. Dynamics include *p* (piano).

82 MORNING MOOD - For French Horns Only 

83 MING COURT Page 40 

Chinese Folk Song

► Write an S under each slur and a T under the tie before you play.

83 MING COURT - For French Horns Only Page 40 

► Write an S under each slur and a T under the tie before you play.

84 GO FOR EXCELLENCE! 

SAWMILL CREEK

Solo with Piano Accompaniment

Bruce Pearson (b. 1942)

French Horn

Piano

1 2 3 4 5 6

p

Go back to the first repeat sign. →

f

4 2 3

7 8 9 10 11 12

f

2 5 2 5 3

13 14 15 16 17 18 19

f

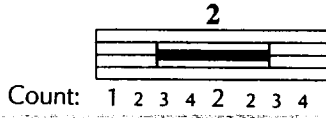
2

20 21 22 23 24 25

f

2 2 2 2

LONG REST



Rest the number of measures indicated.

MONTEGO BAY Band Arrangement

Calypso Song
arr. Chuck Elledge (b. 1961)

1-4 4 5 6 7 8

f

9 10 11 12 13 14 15-16 2

p

17 18 19 20 21 22

p *f*

1st time - *f*
2nd time - *p*

23 24 > 25 26 27 28 1.

29 2. 30 31 32 33 34 > > > >

f

REGAL MARCH Band Arrangement

Bruce Pearson (b. 1942)
arr. Chuck Elledge (b. 1961)

1 2 > 3 4 5 6

f

7 8 9 1. 10 11 2. 12

p

13 14 15 16 17 18

19 20 21 > 22 > 23 > > > > 24 >

f

25 26 27 28 29 > 30 >

DIVISI

Part of the section plays the top notes and part of the section plays the bottom notes.

**UNISON**

Everyone plays the same notes.

85 WARM-UP**86 FULL OF HOT AIR****87 DANZA GIOVANNI**

Italian Folk Song

**88 F MAJOR SCALE SKILL (Concert Bb Major)**

88 C MAJOR SCALE SKILL - For French Horns Only

89 THE MAN ON THE FLYING TRAPEZE

George Leybourne (1842-1884)

▶ Go back to the first repeat sign. ↗

89 THE MAN ON THE FLYING TRAPEZE - For French Horns Only

90 _____

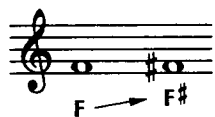
Composer _____ your name

▶ Using the given rhythms, draw in notes to complete the melody. Title and play your composition.

91 FOR FRENCH HORNS ONLY



SHARP



A sharp (#) raises the pitch of a note one half step. It remains in effect for the entire measure.

KEY SIGNATURE

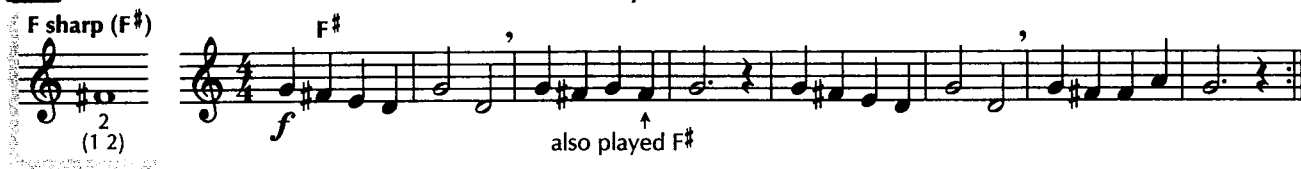


This key signature means play all F's as F sharps.

92 LOOK SHARP



92 LOOK SHARP - For French Horns Only



93 AURA LEE

G. R. Poulton (d. 1867)



93 AURA LEE - For French Horns Only



► Circle the notes changed by the key signature.

94 BARCAROLLE

Jacques Offenbach (1819 - 1880)



94 BARCAROLLE - For French Horns Only

Musical notation for exercise 94, Barcarolle, for French Horns Only. The piece is in 3/4 time and begins with a piano (*p*) dynamic. The melody consists of eighth and quarter notes. The piece concludes with a first ending (1.) and a second ending (2.), both leading to a final cadence.

95 JUST BY ACCIDENT



Musical notation for exercise 95, Just by Accident. The piece is in 3/4 time and begins with a forte (*f*) dynamic. The melody features a mix of eighth and quarter notes with some slurs.

96 C MAJOR SCALE SKILL (Concert F Major)

Musical notation for exercise 96, C Major Scale Skill (Concert F Major). The exercise is in 4/4 time and begins with a forte (*f*) dynamic. It consists of two staves: the top staff contains the scale melody, and the bottom staff contains arpeggiated chords. The bottom staff is labeled "Arpeggio" and "Chords div.".

97 SAILOR'S SONG Page 40

Solo/Soli

, Tutti

Musical notation for exercise 97, Sailor's Song. The piece is in 2/4 time and begins with a forte (*f*) dynamic. It features a melody of eighth and quarter notes. The piece concludes with a first ending (1.) and a second ending (2.).

98 GO FOR EXCELLENCE!



American Folk Song

"This Old Man"

Musical notation for exercise 98, Go for Excellence! "This Old Man". The piece is in 4/4 time and begins with a forte (*f*) dynamic. The melody features eighth and quarter notes with accents (>) and slurs.

DA CAPO AL FINE (D. C. AL FINE)

Go back to the beginning and play until the *Fine*.

99 WARM-UP



▶ Try playing this warm-up on your mouthpiece.

100 IN THE POCKET



101 POCKET CHANGE



102 STRICTLY BUSINESS



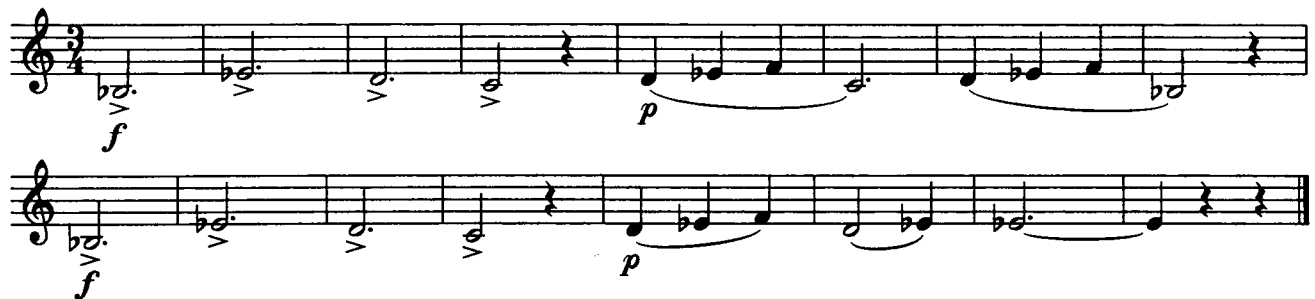
103 SMOOTH SAILING



104 ROSES FROM THE SOUTH



Johann Strauss, Jr. (1825 - 1899)



105 THEME FROM "HANSEL AND GRETEL"

Engelbert Humperdinck (1854 - 1921)



106 FOR FRENCH HORNS ONLY



107 THAT'S A WRAP

Musical notation for 'That's a Wrap' in 4/4 time, featuring a melody with a forte (*f*) dynamic.

108 POLLY WOLLY DOODLE Page 40

American Folk Song

Musical notation for 'Polly Wolly Doodle' in 6/8 time. It includes a melody and a percussion part with 'clap' and 'foot stomp' markings. The piece has two endings.

109 VOLGA BOAT SONG Page 40

Russian Folk Song

Musical notation for 'Volga Boat Song' in 4/4 time, featuring a melody with a forte (*f*) dynamic.

110

Composer _____ your name

Musical notation for 'Hand Clappers' and 'Knee Slappers' in 4/4 time. The 'Hand Clappers' part starts with a forte (*f*) dynamic and includes a piano (*p*) section. The 'Knee Slappers' part also starts with a forte (*f*) dynamic.

▶ Compose a duet (accompaniment) part for Knee Slappers. The first measure has been completed for you. Title and perform your composition.

111 GO FOR EXCELLENCE!



Tielman Susato (1500? - 1561?)

Musical notation for 'Ronde' in 4/4 time, featuring a melody with forte (*f*) and piano (*p*) dynamics.

SINGLE EIGHTH NOTE



A single eighth note is half as long as a quarter note.

$$\text{♪} = \frac{1}{2} \text{ count}$$

DOTTED QUARTER NOTE



A dot after a note adds half the value of the note.

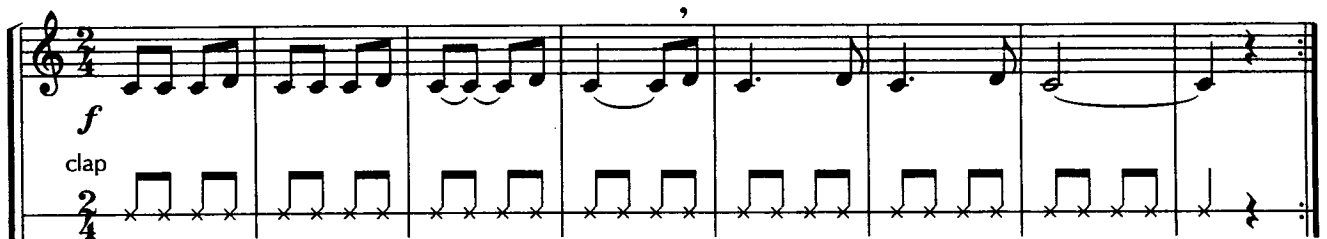
$$\begin{aligned} \text{♪} + \text{.} &= \text{♪} + \text{♪} = \text{♪} \\ 1 + \frac{1}{2} &= 1 + \frac{1}{2} = 1 \frac{1}{2} \text{ counts} \end{aligned}$$

112 WARM-UP - Band Arrangement



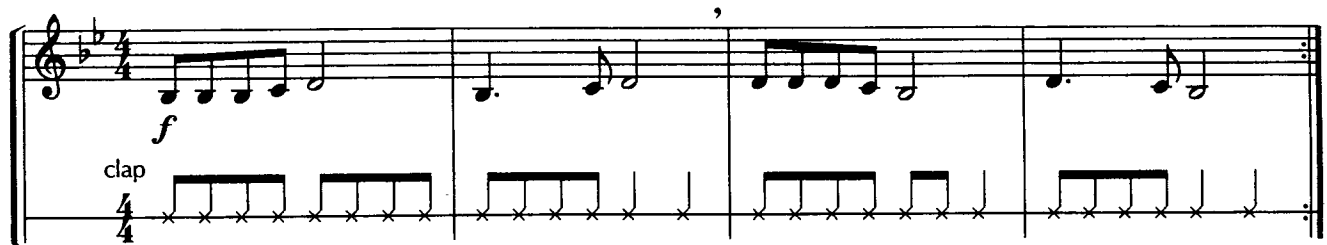
► Try playing this warm-up on your mouthpiece.

113 SHORT CUT



► Write in the counting for the top line before you play.

114 SPOT THE DOTS



► Feel the pulse of three eighth notes during each dotted quarter note.

115 ALL THROUGH THE NIGHT



Welsh Folk Song



115 ALL THROUGH THE NIGHT - For French Horns Only 



116 ALOUETTE

French-Canadian Folk Song
Fine

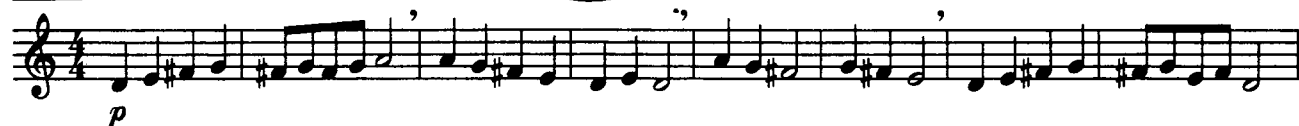


116 ALOUETTE - For French Horns Only

Fine



117 FOR FRENCH HORNS ONLY 



118 JUST A LITTLE OFF THE TOP

Musical notation for 'Just a Little Off the Top' in 4/4 time, key of B-flat major. The melody starts with a forte (*f*) dynamic. It features a series of eighth notes with slurs and accents, ending with a half note.

119 TOP DRAWER - Duet

Musical notation for 'Top Drawer - Duet' in 4/4 time, key of B-flat major. It consists of two parts, A and B. Part A is a melody starting with a forte (*f*) dynamic. Part B is a rhythmic accompaniment of eighth notes, also starting with a forte (*f*) dynamic.

120 HOME ON THE RANGE

Page 41

Daniel E. Kelley (1843 - 1905)

Musical notation for 'Home on the Range' in 4/4 time, key of B-flat major. The melody is presented in three staves. The first staff starts with a forte (*f*) dynamic and ends with a piano (*p*) dynamic. The second and third staves continue the melody with various dynamics including *f* and *p*.

► Circle the notes changed by the key signature.

120 HOME ON THE RANGE - For French Horns Only Page 41 



► Circle the notes changed by the key signature.

121 THE CONQUERING HERO - Duet

George Frideric Handel (1685 - 1759)



122 GO FOR EXCELLENCE!



TEMPOS

Andante - moderately slow
Moderato - moderate speed
Allegro - quick and lively

DYNAMICS

mezzo forte (mf) - medium loud

123 WARM-UP - Band Arrangement

Andante
div.

mf

► Try playing this warm-up on your mouthpiece.

124 HIGH WINDS AHEAD

Andante

f

125 LOOK BEFORE YOU LEAP

Moderato

f

126 Bb MAJOR SCALE SKILL (Concert-Eb Major)

Allegro

mf

Arpeggio

Chords
div.

DYNAMICS *mezzo piano (mp)* - medium soft

127 VARIATIONS ON A THEME BY MOZART

Wolfgang Amadeus Mozart (1756 - 1791)

Moderato

Theme (main melody) , Variation 1 (time signature changes)

mp

Variation 2 (rhythm changes)

Variation 3 (melody changes)

127 VARIATIONS ON A THEME BY MOZART - For French Horns Only

Moderato

Theme (main melody) , Variation 1 (time signature changes)

mp

Variation 2 (rhythm changes)

Variation 3 (melody changes)

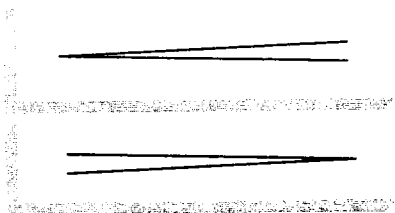
128 FOR FRENCH HORNS ONLY



Andante , G ,

f

DYNAMICS



crescendo - Gradually play louder.

decrescendo - Gradually play softer.

129 SLIPPERY SLURS

Andante

130 WALTZ STREET

Moderato

131 THEME FROM "SYMPHONY NO. 9"



Ludwig van Beethoven (1770 - 1827)

Moderato

132 READY OR NOT

Andante

133 ACH! DU LIEBER AUGUSTINE

German Folk Song

Allegro

Musical score for 'ACH! DU LIEBER AUGUSTINE' in 3/4 time, key of B-flat major. The score consists of three staves. The first staff begins with a dynamic marking of *f* and ends with *mf*. The second staff begins with a dynamic marking of *p*. The third staff begins with a dynamic marking of *f*. The music features various articulations including slurs, accents, and breath marks.

133 ACH! DU LIEBER AUGUSTINE - For French Horns Only

Allegro

Musical score for 'ACH! DU LIEBER AUGUSTINE - For French Horns Only' in 3/4 time, key of B-flat major. The score consists of three staves. The first staff begins with a dynamic marking of *f* and ends with *mf*. The second staff begins with a dynamic marking of *p*. The third staff begins with a dynamic marking of *f*. The music features various articulations including slurs, accents, and breath marks.

134 GO FOR EXCELLENCE!

Page 41

Moderato

Musical score for 'GO FOR EXCELLENCE!' in 2/4 time, key of B-flat major. The score consists of a single staff. The music begins with a dynamic marking of *mp*, followed by a section marked *f*, and ends with a section marked *mp*. The music features various articulations including slurs, accents, and breath marks.

► Play using each of the following articulations: A. B. C.

BALANCE BUILDER

1 Tonic 2 3 Subdominant 4 5 Dominant 6 7 Tonic

Musical notation for 'BALANCE BUILDER' in 4/4 time, key of B-flat major. The staff shows a sequence of notes: 1 (Tonic, B-flat), 2 (D-flat), 3 (Subdominant, F), 4 (E-flat), 5 (Dominant, B-flat), 6 (D-flat), 7 (Tonic, B-flat). Each note is marked with a circled number and a slur.

TRUMPET VOLUNTARY

Band Arrangement

Jeremiah Clarke (1674? - 1707)
arr. Bruce Pearson (b. 1942)

1 Moderato 2 3 4 5 6

7 8 9 10 11 12

13 14 15 16 17 18

19 20 21 22 23 24

25 26 27 28 29 30

31 32 33 34 35 36

37 38 39 40 41

42 43 44 45 46

Musical notation for 'TRUMPET VOLUNTARY' in 4/4 time, key of B-flat major. The score consists of eight staves of music. The tempo is marked 'Moderato'. Dynamics include *f*, *p*, *mf*, *mp*, and *f*. Articulations include accents and slurs. Measure numbers 1 through 46 are indicated. Boxed numbers 5, 13, 21, 29, and 33 indicate specific measures. The piece concludes with a final note in measure 46.

TEMPO

Ritardando (ritard. or rit.) - Gradually slow the tempo.

135 SAKURA - Duet
Andante

Japanese Folk Song

► Draw in a breath mark at the end of each phrase.

136 GRANDFATHER'S WHISKERS



American Folk Song

Moderato

136 GRANDFATHER'S WHISKERS - For French Horns Only



Moderato

137 TWINKLE VARIATION

Wolfgang Amadeus Mozart (1756 - 1791)

Theme

Composer _____ your name

Variation

► Compose a variation on "Twinkle, Twinkle, Little Star."

138 PARTNER SONGS - Duet

American Spirituals

Andante*"Swing Low, Sweet Chariot"*

p *mf*

p *mf*

1. *p*

2. *p*

p *p*

138 PARTNER SONGS - Duet - For French Horns Only**Andante***"Swing Low, Sweet Chariot"*

p *mf*

p *mf*

1. *p*

2. *p*

p *p*

139 MANHATTAN BEACH MARCH



John Philip Sousa (1854 - 1932)

Allegro

Introduction , Theme

139 MANHATTAN BEACH MARCH - For French Horns Only



Allegro

Introduction , Theme

140 DYNAMIC DECISION

Write in the following dynamics from softest to loudest: *mezzo forte piano forte mezzo piano*

softest ← _____ → loudest

141 FOR FRENCH HORNS ONLY



Moderato

TEMPO

Largo - slow

142 "LARGO" FROM THE NEW WORLD SYMPHONY

Antonin Dvořák (1841 - 1904)

Largo

**143 JUST FINE**

Page 41

Moderato

**144 CHORALE - Duet**

Lowell Mason (1792 - 1872)

Largo

A.

B.

144 CHORALE - Duet - For French Horns Only

Largo

A.

mp *mf* *mp* *mf*

B.

mp *mf* *mp* *mf*

mp *f* *mf* *f* *rit.* *p*

mp *f* *mf* *f* *rit.* *p*

145 TEMPO TIMEWrite in the following tempos from slowest to fastest: **Andante** **Allegro** **Moderato** **Largo**

slowest ← _____ → fastest

146 GO FOR EXCELLENCE!

Allegro

mf

147 RICOCHET ROCK

Chuck Elledge (b. 1961)

Allegro

f

clap

147 RICOCHET ROCK - For French Horns Only

Allegro

f

148 LOCH LOMOND

Scottish Folk Song

Moderato

mp

f

mp

148 LOCH LOMOND - For French Horns Only

Moderato

149 SHALOM, CHAVERIM

Hebrew Folk Song

Andante

▶ Draw in a breath mark at the end of each phrase.

149 SHALOM, CHAVERIM - For French Horns Only

Andante

▶ Draw in a breath mark at the end of each phrase.

150


Composer _____ your name

▶ Compose an ending for this melody. Title and play your composition.

151 FOR FRENCH HORNS ONLY

Moderato

152 GRANDFATHER'S CLOCK


Page 41 

Henry C. Work (1832 - 1884)

Moderato

Fine

152 GRANDFATHER'S CLOCK - For French Horns Only

Page 41 

Moderato

Fine

► Circle the notes changed by the key signature.

153 KUM BA YAH



African Folk Song

Largo

153 KUM BA YAH - For French Horns Only



Largo

154 GRANT US PEACE - Round

German Canon

Andante

1. *mp*

2.

3.

154 GRANT US PEACE - Round - For French Horns Only

Andante

1. *mp*

2.

3.

155 GO FOR EXCELLENCE!

Moderato

mf

p — *mf* *p* — *mf* *p* — *f* — *mp*

EMPEROR'S HYMN

from the "Emperor" String Quartet Op. 76, no. 3
Solo with Piano Accompaniment

Franz Joseph Haydn
(1732 - 1809)

1 **Andante**

French Horn

2 3 4 5

Piano

f *mf*

6 7 8 9 10

11 12 13 14 15

p

16 17 18 19 20

f *mf*

21

22 23 24

mp

mp

25

25 26 27 28

mf

mf

29

29 30 31 32 33

mf *f*

mf

34

34 35 36 37 38

rit.

rit.

ROCKIN' RONDEAU

Band Arrangement

Based on a theme by
Jean-Joseph Mouret (1682-1738)
arr. Chuck Elledge (b. 1961)

Moderato

1 *f* 2 3 4 **mf** 5 6 7

8 9 10 11 1. 12

13 2. 14 15-16 2 17 18 19-20 2

21 22 23 24 25 26

27 28 29 **f** 30-33 **Allegro 4** 34 35 **mf**

36 37> 38> 39 **f**

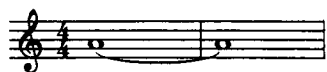
40 41 42 43

44 45 46 47 48 *rit.*

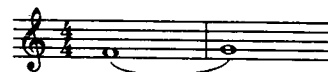
Detailed description: This is a single-staff musical score for a band arrangement. The piece is in 4/4 time and begins with a 'Moderato' tempo. The first line (measures 1-7) starts with a forte (*f*) dynamic and a mezzo-forte (*mf*) dynamic. The second line (measures 8-12) continues the melody. The third line (measures 13-20) includes first and second endings, with a mezzo-piano (*mp*) dynamic. The fourth line (measures 21-26) returns to a mezzo-forte (*mf*) dynamic. The fifth line (measures 27-35) marks the beginning of an 'Allegro 4' section, starting with a forte (*f*) dynamic and a ritardando (*rit.*) marking. The sixth line (measures 36-39) continues with a forte (*f*) dynamic. The seventh line (measures 40-43) and eighth line (measures 44-48) conclude the piece with a ritardando (*rit.*) marking.

EXCELLERATORS - FOR FRENCH HORNS ONLY

TIE



SLUR



A tie is a curved line that connects two notes of the same pitch. Tied notes are played as one unbroken note.

A slur is a curved line that connects two or more notes of different pitches. Tongue only the first note of a slur.

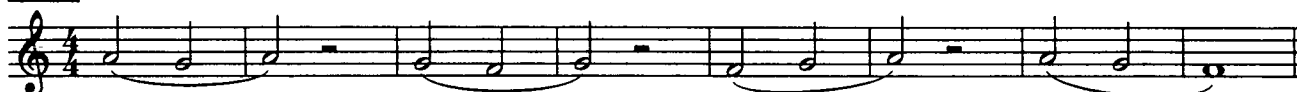
4A



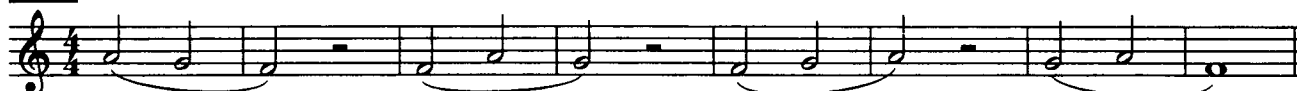
4B



12A



12B



23A



23B



39



58



EXCELLERATORS - FOR FRENCH HORNS ONLY**77**

Musical notation for exercise 77, consisting of two staves in 4/4 time with a key signature of two flats. The melody is written on a treble clef staff with eighth and quarter notes, and the bass line is on a bass clef staff with quarter and eighth notes.

83

Musical notation for exercise 83, consisting of one staff in 4/4 time with a key signature of two flats. The melody is written on a treble clef staff with eighth notes, featuring slurs and accents.

97A

Musical notation for exercise 97A, consisting of one staff in 4/4 time with a key signature of two flats. The melody is written on a treble clef staff with eighth notes, featuring slurs and accents.

97B

Musical notation for exercise 97B, consisting of two staves in 4/4 time with a key signature of two flats. The melody is written on a treble clef staff with eighth notes, and the bass line is on a bass clef staff with quarter notes.

108

Musical notation for exercise 108, consisting of one staff in 4/4 time with a key signature of two flats. The melody is written on a treble clef staff with quarter and eighth notes, featuring slurs and accents.

109

Musical notation for exercise 109, consisting of two staves in 4/4 time with a key signature of two flats. The melody is written on a treble clef staff with eighth notes, and the bass line is on a bass clef staff with quarter notes.

EXCELLERATORS - FOR FRENCH HORNS ONLY**120**

Exercise 120 consists of two staves of music in C major and common time. The first staff begins with a treble clef and a common time signature. The melody starts on G4, moving through A4, B4, and C5, then descending through B4, A4, G4, F4, E4, D4, C4, and B3. The second staff continues the melody, starting on B3 and moving through A3, G3, F3, E3, D3, C3, and B2, ending with a double bar line.

134

Exercise 134 consists of two staves of music in B-flat major and 4/4 time. The first staff begins with a treble clef and a 4/4 time signature. The melody starts on B-flat4, moving through C5, D5, E5, and F5, then descending through E5, D5, C5, B-flat4, A4, G4, F4, and E4. The second staff continues the melody, starting on D4 and moving through C4, B3, A3, G3, F3, E3, D3, and C3, ending with a double bar line.

143

Exercise 143 consists of two staves of music in C major and common time. The first staff begins with a treble clef and a common time signature. The melody starts on G4, moving through A4, B4, and C5, then descending through B4, A4, G4, F4, E4, D4, C4, and B3. The second staff continues the melody, starting on B3 and moving through A3, G3, F3, E3, D3, C3, and B2, ending with a double bar line.

152

Exercise 152 consists of three staves of music in 4/4 time. The first staff begins with a treble clef and a 4/4 time signature. The melody starts on G4, moving through A4, B4, and C5, then descending through B4, A4, G4, F4, E4, D4, C4, and B3. The second staff continues the melody, starting on B3 and moving through A3, G3, F3, E3, D3, C3, and B2, ending with a double bar line. The third staff continues the melody, starting on B2 and moving through A2, G2, F2, E2, D2, C2, and B1, ending with a double bar line.